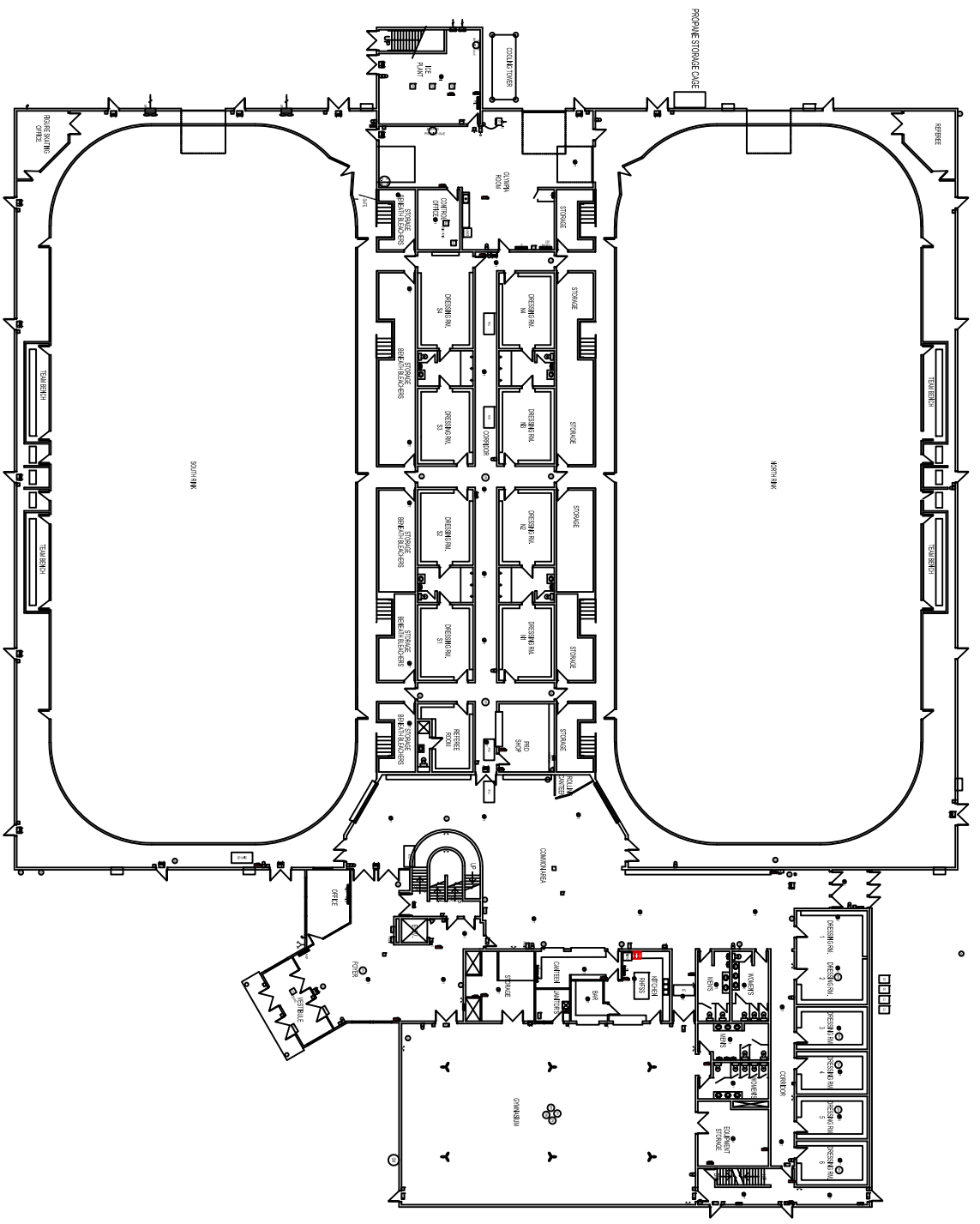


## FLOOR PLAN LAYOUT

SCALE: N.T.S.

## KINSMEN-ALLARD ARENA - 80 ALLARD AVENUE

(TOTAL FLOOR AREA OF ARENA - 30,059 SF)

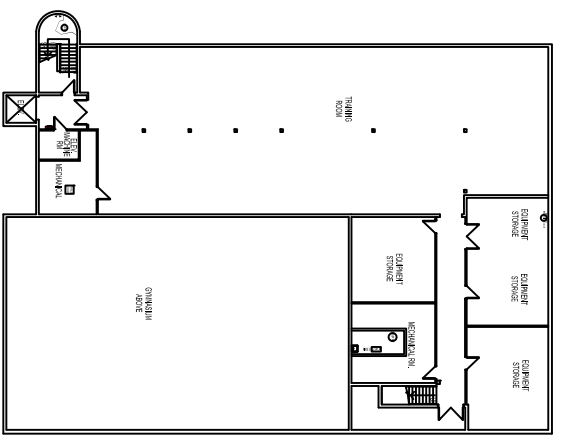


**MAIN FLOOR**

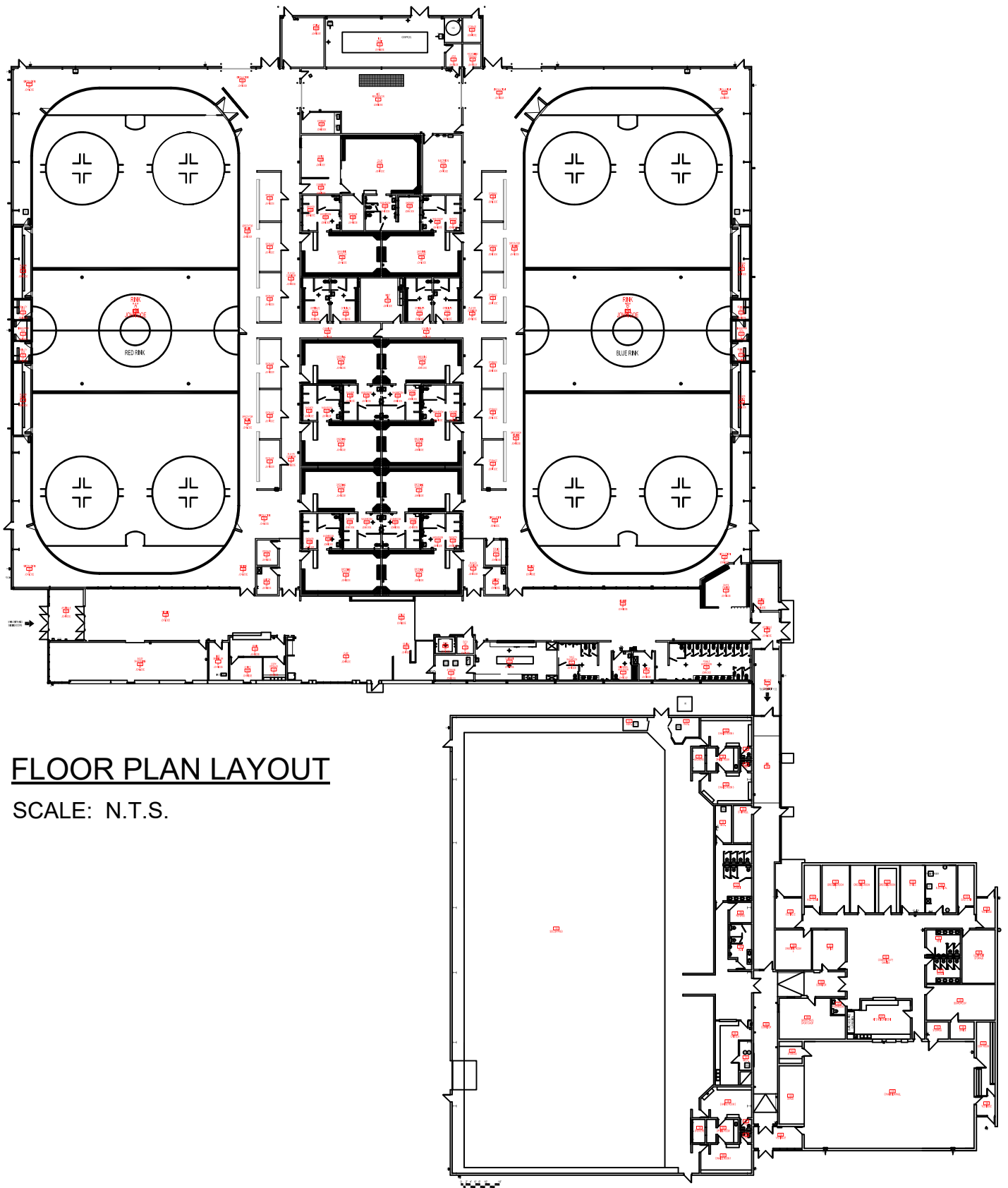
SCALE: N.T.S.

**DAKOTA C.C. - MULTIPLEX - 1188 DAKOTA STREET**

(TOTAL FLOOR AREA OF ARENA - 65,843 SF)



**MEZZANINE LEVEL**

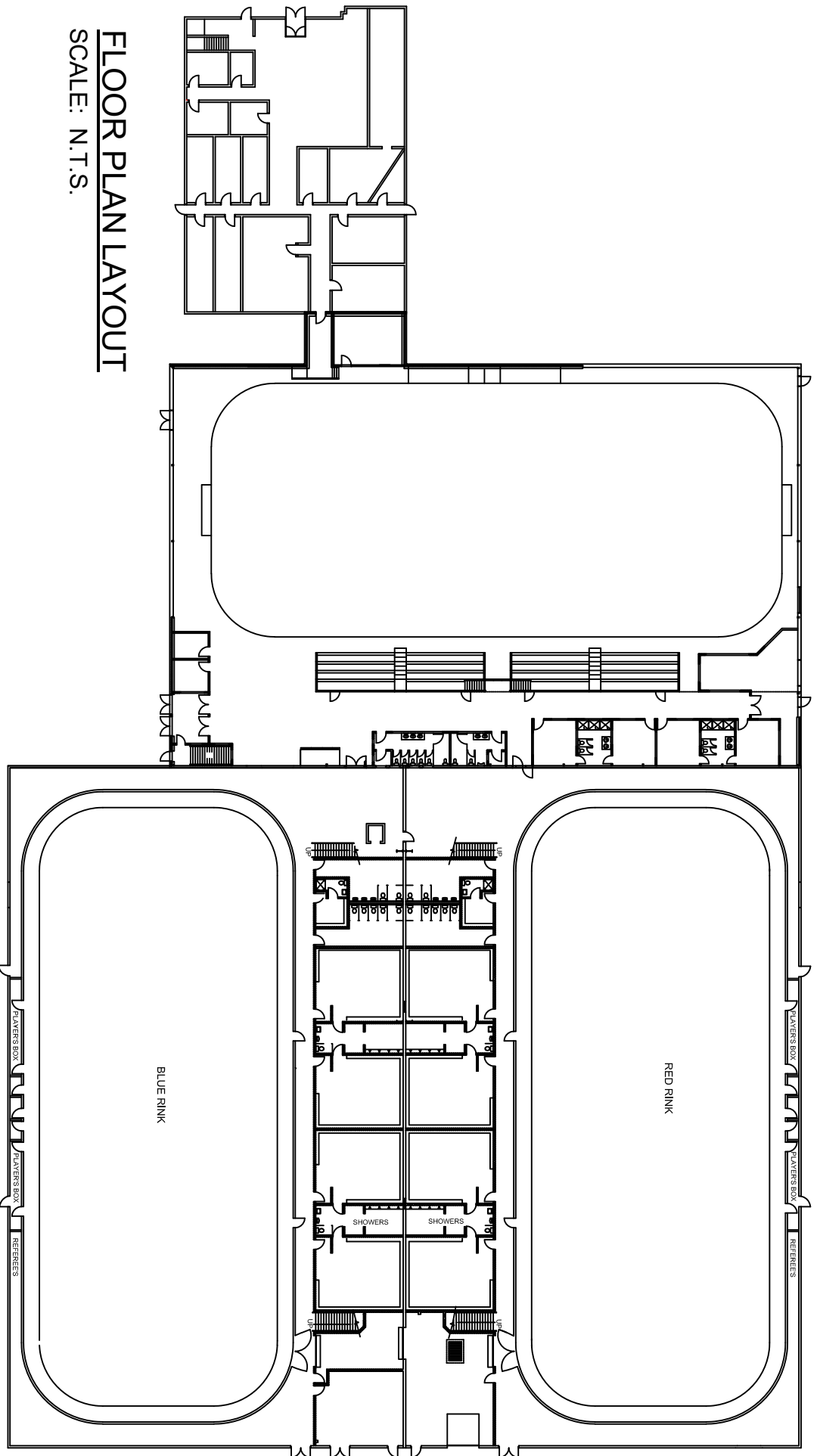


**FLOOR PLAN LAYOUT**

SCALE: N.T.S.

**GARDEN CITY C.C. - MULTIPLEX - 745 KINGSBURY AVENUE**

(TOTAL FLOOR AREA OF ARENA - 102,047 SF)



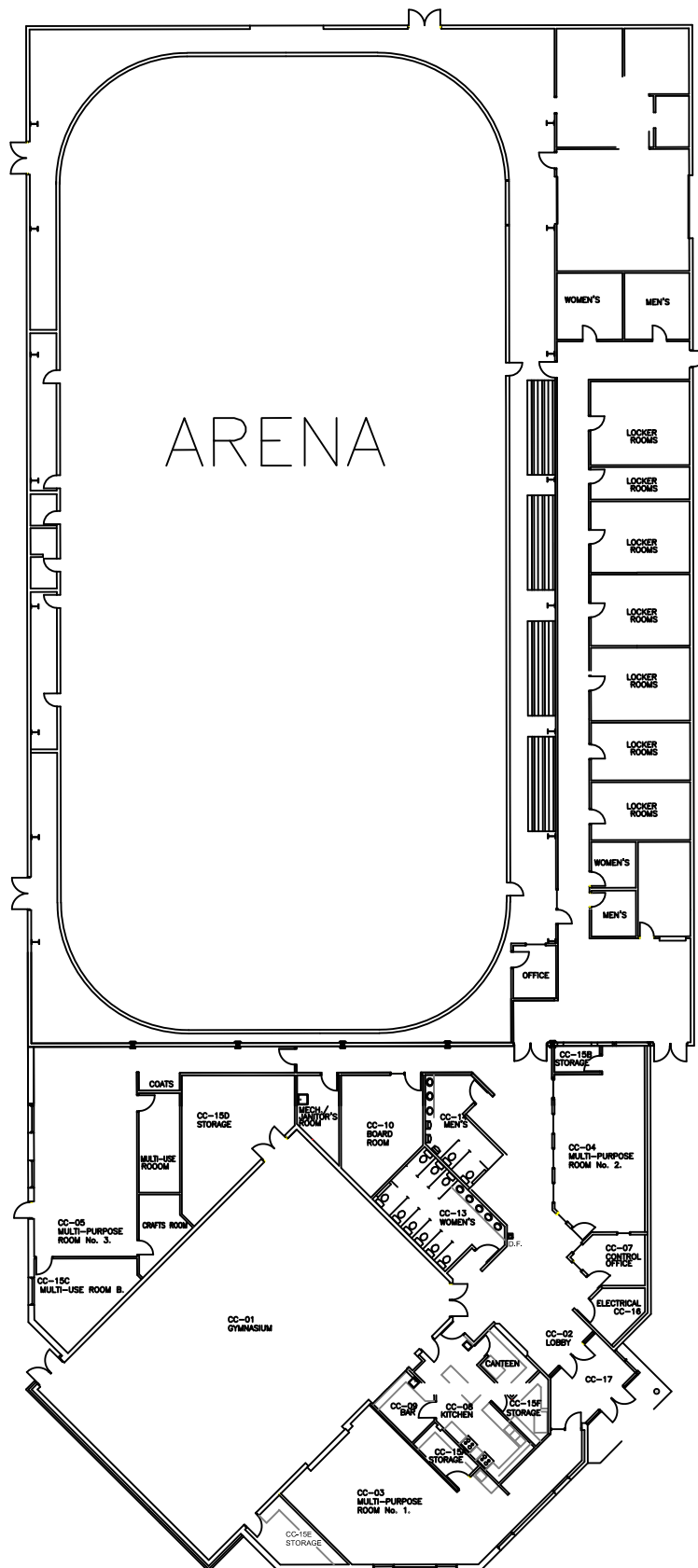
**FLOOR PLAN LAYOUT**

SCALE: N.T.S.

**GATEWAY C.C. - MULTIPLEX - 1717 GATEWAY ROAD**

(TOTAL FLOOR AREA OF ARENA = 55,790 SF - Includes 2017 Arena Addition)

Refer to Appendix C for 2017 Gateway C.c.-Arena Addition)

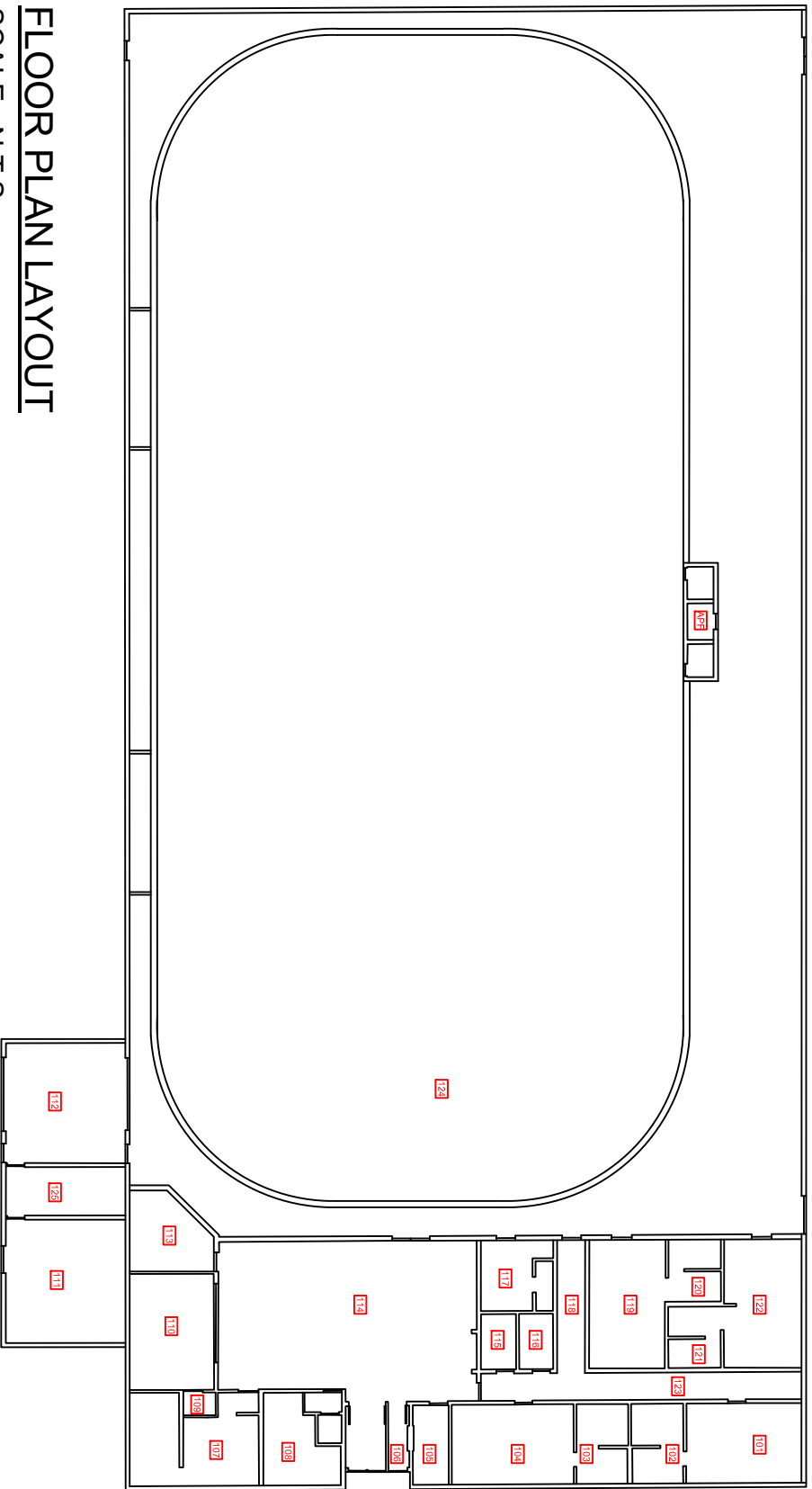


**FLOOR PLAN LAYOUT**

SCALE: N.T.S.

**GLENWOOD C.C. - ARENA - 27 OVERTON STREET**

(TOTAL FLOOR AREA OF ARENA = 24,771 SF)

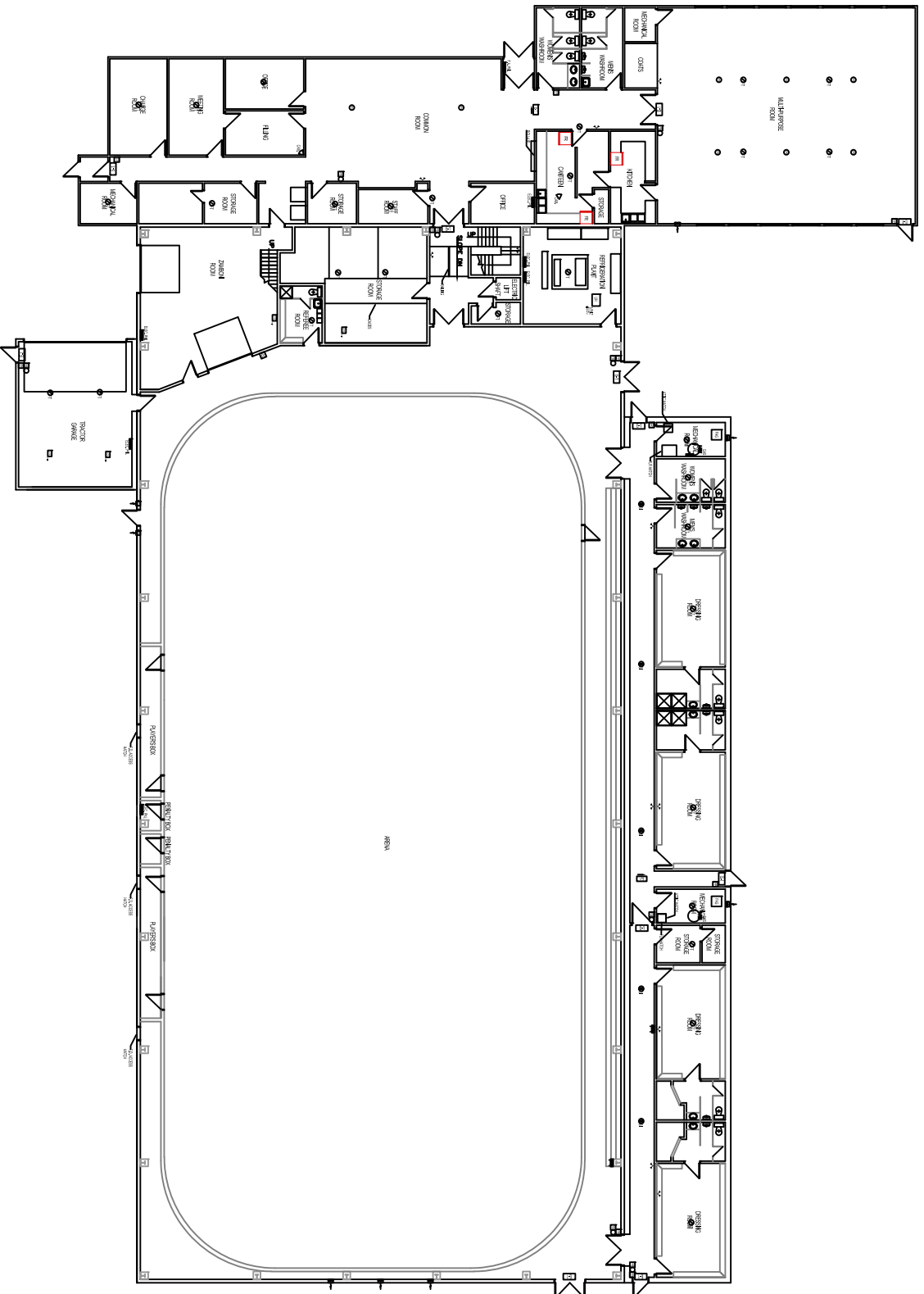


**FLOOR PLAN LAYOUT**

SCALE: N.T.S.

**MAPLES C.C. - MULTIPLEX - 454 ADSUM DRIVE**

(TOTAL FLOOR AREA OF ARENA = 27,557 SF)

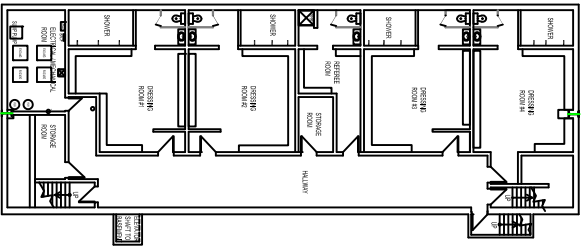


**FLOOR PLAN LAYOUT**

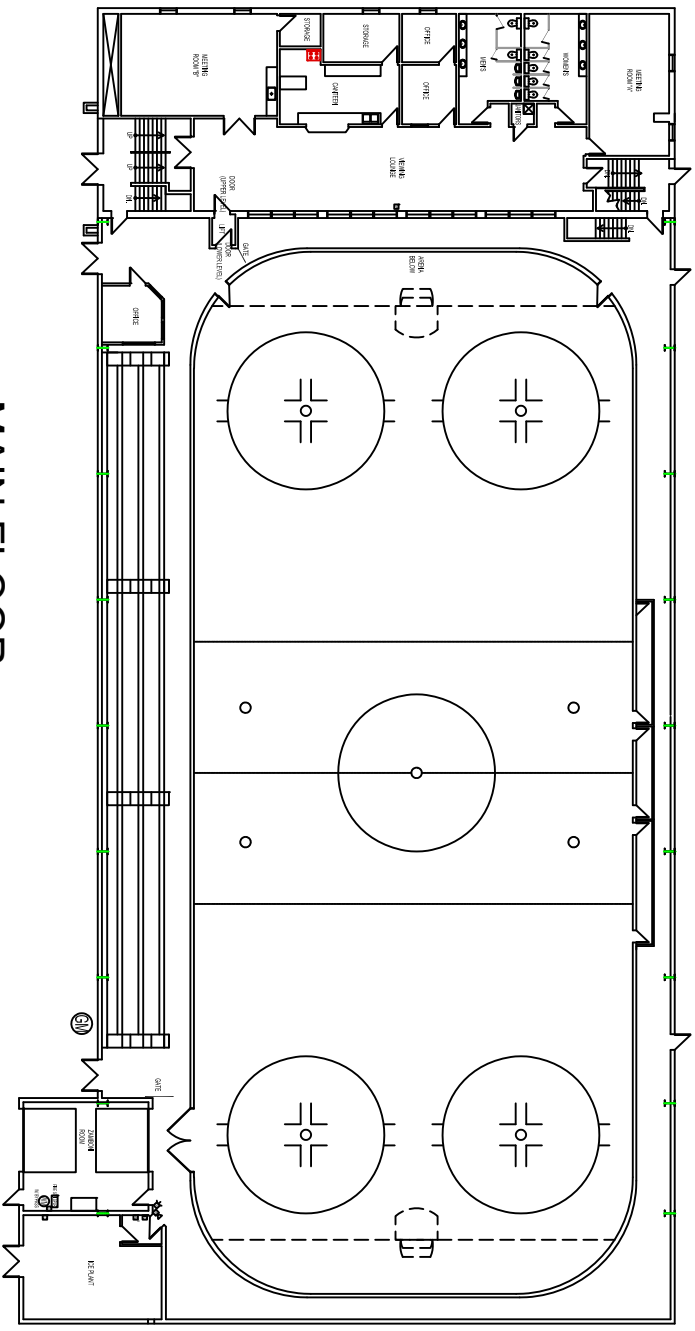
SCALE: N.T.S.

**RICHMOND KINGS C.C. - ARENA - 666 SILVERSTONE AVENUE**

**(TOTAL FLOOR AREA OF ARENA = 24,348 SF)**



**MEZZANINE**  
SCALE: N.T.S.

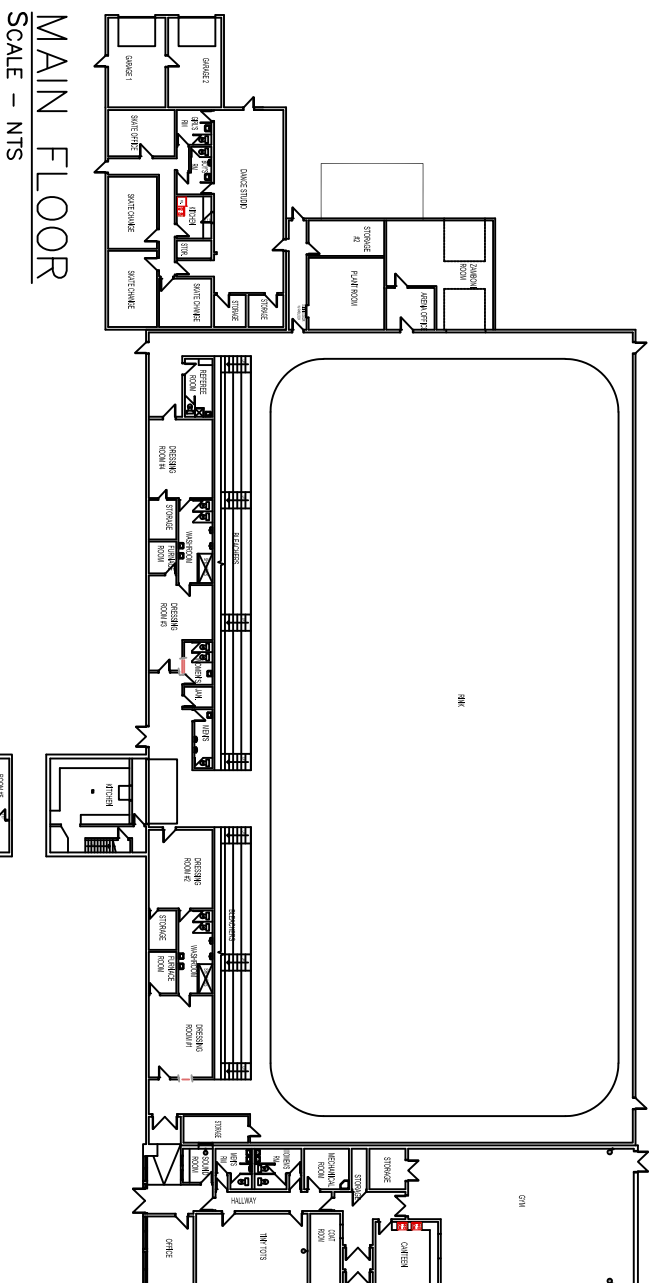


**MAIN FLOOR**  
SCALE: N.T.S.

**ST. NORBERT C.C. - ARENA - 3450 PEMBINA HIGHWAY**

(TOTAL FLOOR AREA OF ARENA = 28,097 SF)





MAIN FLOOR  
SCALE - NTS

MEZZANINE  
SCALE - NTS

WEST KILDONAN MEMORIAL C.C. - ARENA - 346 PERTH AVENUE

(TOTAL FLOOR AREA OF ARENA = 25,951 SF)